

FIRE + CLAY

The Arts House Trust,
Pah Homestead

Auckland Studio Potters
Annual Exhibition



Catalogue of Works

Stuart Spackman, Premier prize winner 2022

AUCKLAND
STUDIO
POTTERS



THE
ARTS
HOUSE
TRUST



RICK RUDD
FOUNDATION





Premier Award Winner sponsored by CCG Industries



Yueh Luo

Blue Chartreuse Composition

Stoneware



Residency Package Winner sponsored by Driving Creek Railway





BotPots Award Winner sponsored by BotPots



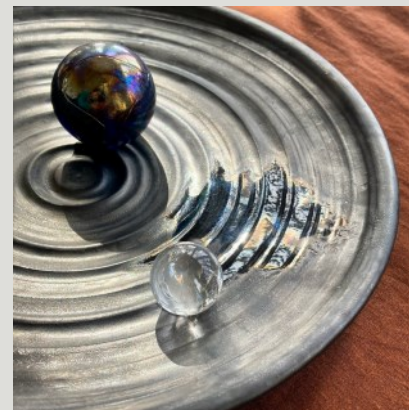
Elizabeth Walker

Silent tears

Porcelain paper clay, slip, oxides



ASP Residency Award Winner sponsored by the Arts House Trust



Iza Lozano

Oracle xXXDinner is served

Glazed stoneware, melted marble, marble and quartz



First Time Exhibitor Winner sponsored by the Rick Rudd Foundation



Alex Jones

Fat winged vase

High fired stoneware



Aidan Rail

Growth

Ceramic



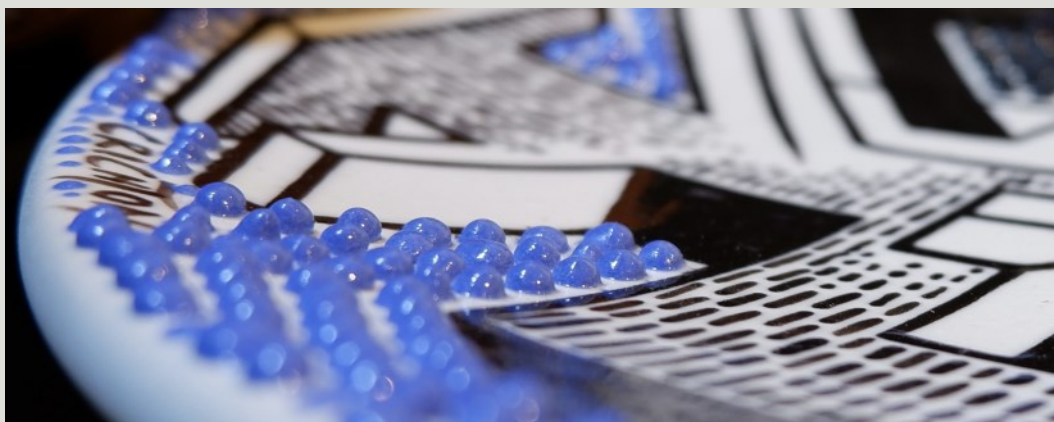




Angela Lassig

Fern Pot II (From the Grotto of Glaucus)

Mid fired stoneware, applied sprigs and sculpting







Anna Crichton

The massacre of the mighty

Upcycled bowl with underglaze and 3D glaze

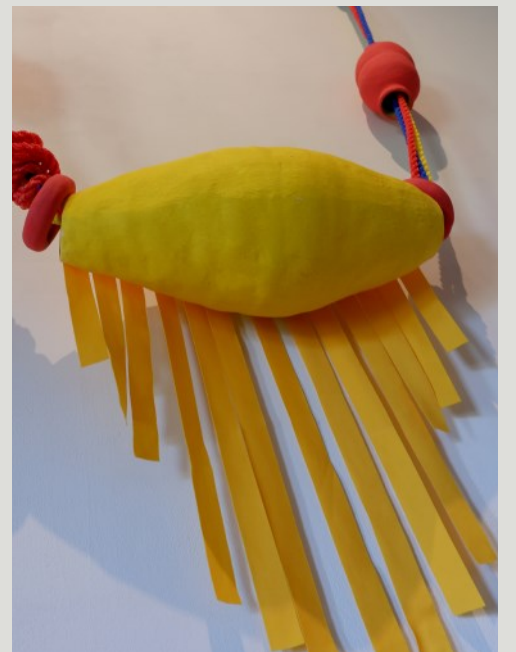




Annie McIver

Gabrielle Hare

Porcelain



Catherine Guevara

Colombian Chromatics

Mid fired stoneware, underglaze and poly rope



Claire Preen

Little Faun

Stoneware and slip





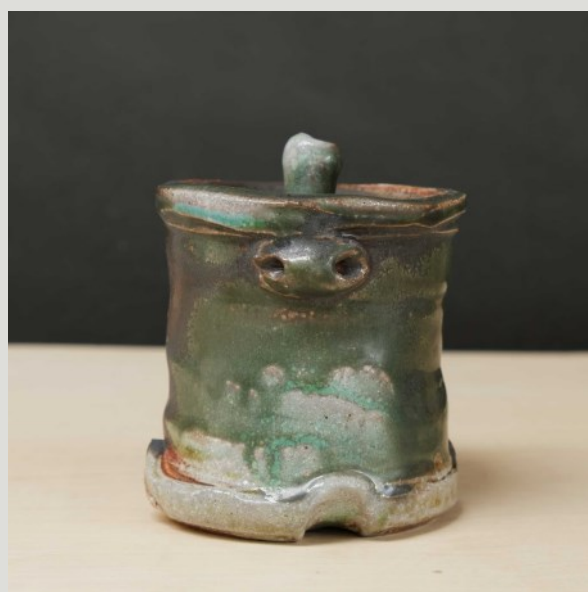




Duncan Shearer

Jug

Woodfired, soda glazed stoneware



Duncan Shearer

Tea Caddy

Woodfired, soda glazed stoneware



Elena Renker

Sculptural Vase

Woodfired stoneware



Emma Zhang

Unleashed

Terracotta







Jill Duncalfe

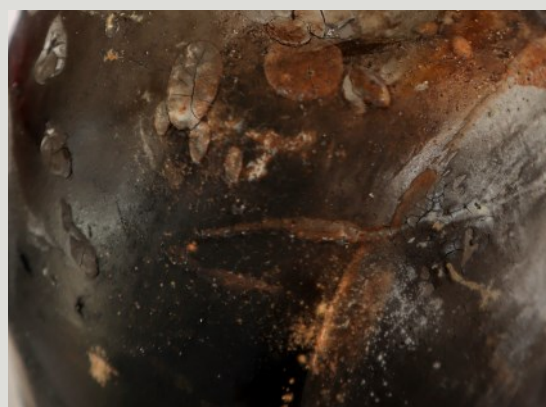
Fermented

Obvara fired stoneware









Kristen Calder

Is there room in the dark, in between the changes?
Like a light that's drifting, in reverse I'm moving...

Pitfired earthenware with roadside clay slip

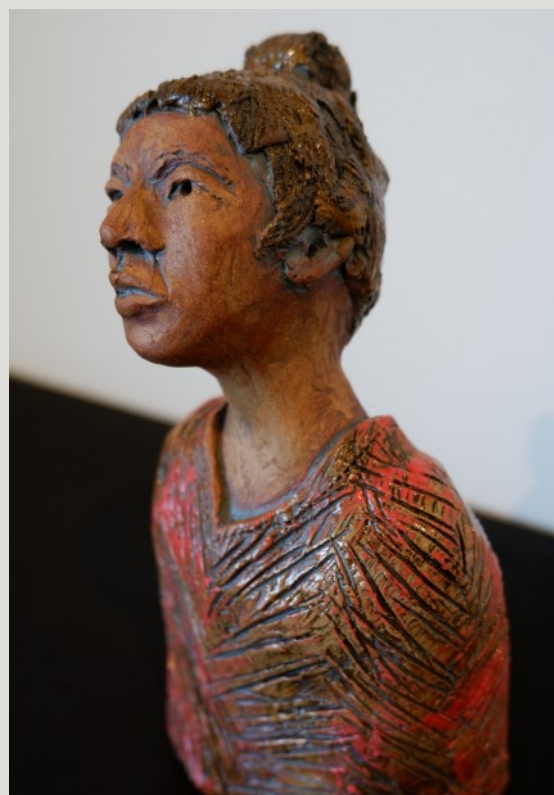


Kristen Calder

The Eroding Shapes of Solastagia

Stoneware with pink sandstone slip and ash glaze





Louise Garbett

Small bust

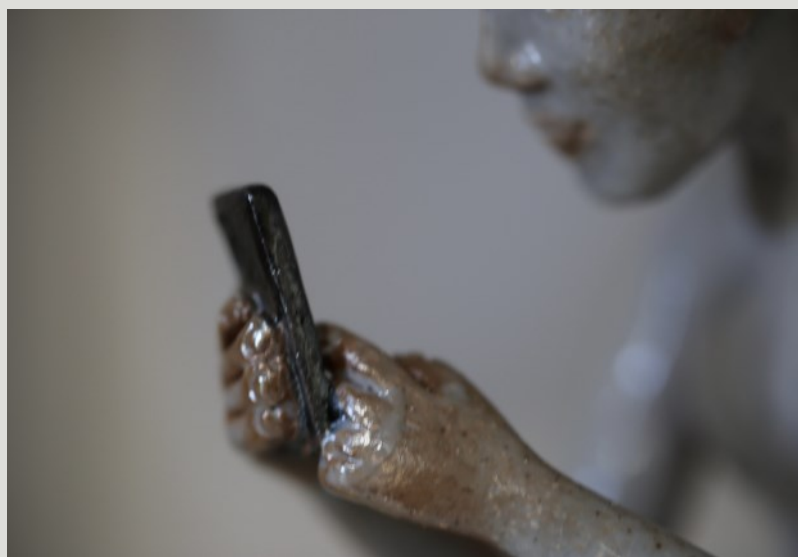
Midfired clay with oxides, slip underglaze and glaze



Maak Bow

Enclosed Form

Wheel thrown, glazed ceramic





Margaret Sumich

Hazardous Journey

Woodfired and salt glazed with Harakeke and barbed wire



Matt McLean

Granddaughter sketch

Earthenware



Michelle Bow

Blessed with Imperfection

Porcelain and 24ct gold

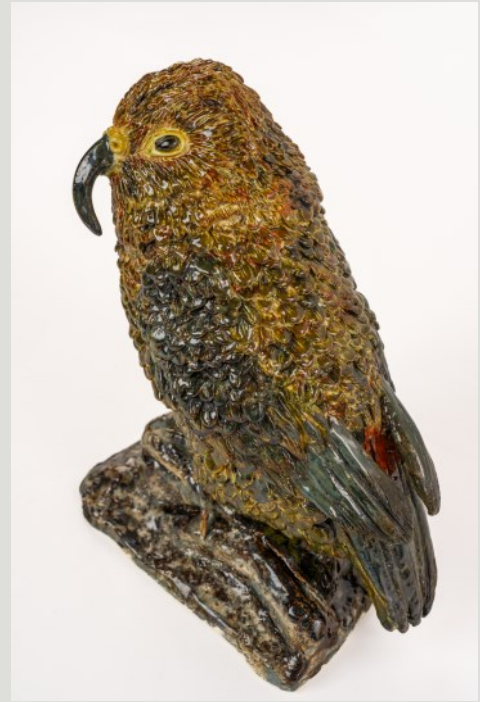




Pennie Black

PSAMATHE

Coiled stoneware clay





Rebecca Steedman

Inside / Outside
Ceramic





Simon Leong

Perplexity

Woodfired, salt glazed stoneware



Simon Leong

Pumpkin Teapot

Woodfired, salt glazed stoneware



Siriporn Falcon-Grey

Café con leche

Obvara fired earthenware with porcelain slip



Stephen Aitken

Harvest Jug

Woodfired, soda glazed stoneware





Teresa Watson

Flores

Midfired recycled clay

