



The Big Clay Day Out! above: Watching the have-a-go; below: Peter Lange's winning 182cm handle. More on p4-5

Centre Report

Nadine Spalter

Greetings from the ASP office! As most of you know our Admin assistant Pennie Blair left us for the music industry, not because they're better than us potters (!) but because they could offer her full time work. Farewell and good luck Pennie! We have employed Nina Chechelashvili, a member of ASP and keen potter. She will be in the office 2 mornings a week, it's great to have her on board.

On another note, we are sad to see Margaret Sumich finishing up teaching her Thursday night class. As always we understand her decision, though it is hard to see a beloved teacher leaving! We will have Margaret back as a specialist teacher from time to time, (not letting her go that easily!) and wish her well with her new life adventures. We are pleased to have Brendan Adams take the Thursday night class for Term 1. The Fire and Clay exhibition has got lots of great comments and feedback. Thanks to our many volunteers who have helped to look after the exhibition. The Pah Homestead shop reports good sales, and the upstairs space worked really well for us.

As we head towards the end of the year, here are a few dates to remember:

- The studio will close for the holidays on Friday 22nd December 4pm. All welcome to pop in for a farewell drink and some nibbles.

- We will re-open on Wednesday 17th January 2018.

Term 1 2018 classes will start on Monday 5th February.

Most important (in our opinion!) is that **the last day for accepting work to be fired (bisc and glaze fired) is Saturday 16th December.** Please consider the Kiln shed completely CLOSED after 16th December. This gives Toby and me one week to fire absolutely everything before we close. Similarly, please take all your work home before the end of the year. This includes your class shelves in the studio, all bisc ware and all glazed pots. The wet cupboards will be emptied out, as will the glaze shelves and the bisc shed. Plenty of warning ...

We had an excellent day for the Big Clay Day out last weekend (more on that inside). You may have noticed the massive painted sign that was put up outside the centre - thanks to Mark Goody for painting this for us, and to Liz Caughey for donating the sign. It was truly impressive!

Last but not least... PLEASE pick up your work from all areas of the studio by next Friday 22 December. We will be having our annual cleanout at the beginning of January, and anything left behind may be thrown away.

Have a safe, healthy and happy summer!

- Nadine and Toby

CALENDAR

Lost and Found - Helen Perrett and Susan St Lawrence (p6)
Opening 21st Dec 2017 at 5.30pm
Artspost, Waikato Museum
<http://waikatomuseum.co.nz/artspost/exhibitions/coming-soon/>

This Unconquerable World
Kate Fitzharris
Until 23 December
Masterworks Gallery, Auckland
www.masterworksgallery.co.nz

Leading Ladies
until 28 January 2018
Te Uru Waitakere Contemporary
Gallery, Titirangi
www.teuru.org.nz

Whenua Hou: New Maori Ceramics
Until 13 January 2018
Franklin Arts Centre, Pukekohe
facebook.com/events/1724271307607361

Slow Throwing Workshop (p2)
Sat-Sun 3&4 February
Rahu Road Pottery
www.rahuroadpottery.co.nz

Portage Ceramic Awards
11 February 2018
Te Uru Waitakere Contemporary
Gallery, Titirangi
www.teuru.org.nz

Waiclay Ceramic Awards
Until 18 February 2018
Waikato Museum
waikatomuseum.co.nz



Centre Notices and Events

Summer Dates for the ASP Centre:

Last day of Term 4 classes:
Thursday 14 December

Last day to put pots out to be fired:
Saturday 16 December

Last day the studio is open - please collect any work you have left on shelves, in the wet cupboard, etc:
Friday 22 December
Farewell drinks and nibbles at 4pm

Online class enrolment opens:
15 January 2018 at 8am

Last day to pay in full for re-enrolling in a class (or you may lose your space to new people queuing online):
Monday 15 January 2018

First day the Centre is open again:
Wednesday 17 January

First day of classes for Term 1 2018:
Monday 5 February

Summer Workshop: Lithophane with Ilona Romule

22-26 January, 9:30am-4:30pm
Cost: \$300 for 5 full days tuition
Materials and tools extra

Our first workshop for 2018 is a Lithophane Workshop run by Latvian Ceramist Ilona Romule. Lithophanes are made of fine sheets of translucent white porcelain etched with a decorative motif. When lit from behind, these sheets show the scene, creating a three dimensional effect. More details are on the ASP website: ceramics.co.nz. Please have a read and if you're keen to sign up we will need to know asap. Please email the office at asp@ceramics.co.nz to book.

Specialist Class Term 1: Peter Collis: Getting Bigger

Wednesdays 10am-1pm
Cost: \$280 for 10 weeks
Applications open 8am 15 Jan 2017.
Materials and firing costs additional.

This term Peter Collis will show you how to 'Get Bigger' with your pots. He will cover how to handle larger pieces of clay, right from wedging and centering, to throwing larger. He will also teach you how to dry throw using a gas flame. Although this is a specialist class all levels are welcome, but some experience with throwing would be beneficial.

Farewell from your Editor (but not completely)

Suzy Dünser

As I get ready to type this, I know exactly how much space I have to express whatever thoughts come to mind: it's from here down to the Rahu Road ad. I have pared the workshop descriptions to fit the space to the left; written the centre dates extra large and for a second time, because I know information can never be repeated often enough. I have 1-1/2 pages left for the Big Clay Day Out - no one has sent me any writing about that - will I write heaps, or rely more on photos to fill the space? Turn to p4 to find out.

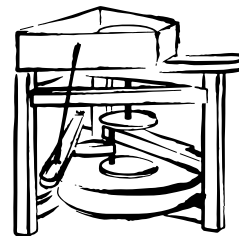
This is the last ASP newsletter I will edit, and probably also the last newsletter where such questions of layout and quantity will be an issue. After 7 years, I am handing over the editorial reins to Katherine Habershon, and after many more years, the newsletter is going to go online. It will have a new format, one that allows for more variation in amount of content. Items in the newsletter will also be able to link to more comprehensive coverage on the ASP website.

Back in the non-editor day, I wrote actual articles for the newsletter - I hope to get back to doing that again, and I hope you all will send things to Katherine, too.

Before I run out of space, I would like to thank the people who have written for the newsletter while I've been editor: The Centre Directors, the Diploma students, and all the generous members who have shared their time and experiences with the ASP membership. Thank you all.

Keep in touch
Suzy xx

SLOW WHEEL THROWING POTTERY WORKSHOP



Rahu Rd Pottery

142 Rahu Road, Paeroa 3674
07 8626974, 021 02388957
www.rahuroadpottery.co.nz
info@rahuroadpottery.co.nz

Dates: 3 & 4 February

Using soft clay and a slow speed, let the sensual nature of throwing express itself in your work. This course is the antidote to stiff minimalism and a chance enjoy the haphazard, the irregular and the fluid nature of clay. You will be using a Leach treadle wheel and exploring a range of simple forms that allow room for experimentation. Some wheel throwing skills are essential. Clay provided. Maximum 4 people. Cost - \$300. Tutor - Duncan Shearer. More information at: www.rahuroadpottery.co.nz



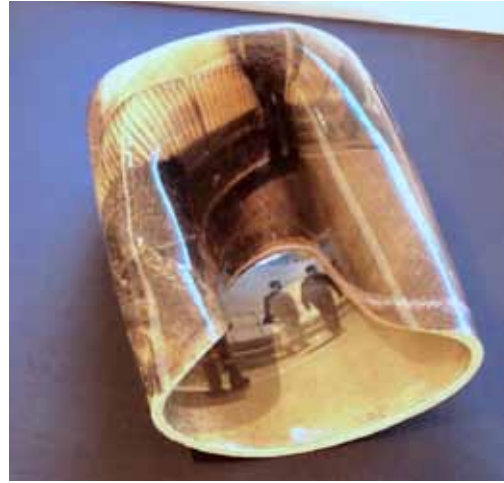


Fire and Clay - I'll be back!

Nicki Paull

This morning I had the pleasure of volunteering for the first time at the Fire and Clay exhibition at Pah Homestead. The experience not only afforded me an opportunity to return and linger longingly over pieces without attracting the suspicious gaze of gallery volunteers, it also provided me with an insight into the varied interests and backgrounds of the pottery-loving public. And what a lovely public it is!

Much to my delight, I encountered several fellow students of pottery – from Kerikeri, Waiheke and parts unknown. We discussed the variety of the pieces and skill of the potters, and shared our own interests and experiences in matters of clay. It was a pleasure to be able to note in the volunteers' register that the Waiheke based diploma students felt privileged to have guest tutors such as Peter Collis and Brendan Adams making the journey over to the Island to share their expertise. I was equally delighted



to boast about the work of my fellow ASP Tuesday morning classmates and tutors, whose work was included in the exhibition. All in all, a most pleasant way to spend a Wednesday morning skiving off work. It reaffirmed how lucky we are at ASP to share cake with and learn from such an exceptionally talented bunch. Sign me up for 2018 Nadine!

Clockwise from top left: Premier Award - John Parker; First Merit Award - Rick Rudd; First Time Entrant Award - Aidan Rall; JWAT ASP Residency Award - Thomas Blackstock; Second Merit Award - Kate McLean
Photos by Michelle Bow



Repeat, repeat, repeat - Part 2

Joelle March

With making complete, installation was next. We all arrived early to set up for assessment after which there was a small window for public viewing. If you attended the public exhibition, you would agree, it was outstanding. Everyday spaces at the studio became viewing platforms for amazing works of art. The bisque shed became an oasis of half face

pinch pots providing a home for succulents, the library turned into a fantastical aviary of eyes and beaks, the deck housed a glass cabinet full of pooches on show, and there was much, much more. Everyone's work shone and had their personal point of view. A big thanks to Peter who brought out the best in everyone.



Thomas Blackstock



Phil Brooks



Yue Luo

THE BIG CLAY DAY OUT

Suzy Dünser

Photos by Michelle Bow

I'm not sure when the name of our annual open day became the Big Clay Day Out, but we've been running it for over 20 years now - raku firings, paint a pot, have a go, work for sale, demonstrations, sausages - in 1996 all this was already on offer, plus they unloaded a salt kiln on the day! Maybe next year...

We talk occasionally in ASP Committee meetings about how the membership has changed over the years - how the lives our members lead have changed, what they hope to get out of membership at the ASP, what they can contribute - and so it's very heartening to see how the BCDO still comes together so beautifully after all these years. So many people putting their time and effort and hearts into making this a great day, for ASP members as well as an ever-increasing community of people around us who are keen to know more about pottery, to try it and to own it. (She pauses to wipe away a small tear of gratitude.) So herewith, a giant

THANK YOU ☆

to everyone who participated - from the working bee the weekend before, through the flurry of activity all day, right up until the ever-astounding one-hour total restoration of the Centre to class-ready state at the end of the day. It was a great day.



Festival Wrap-Up

Suzy Dunser

The 2017 Auckland Festival of Ceramics concluded last weekend with the Big Clay Day Out - five weekends and four weeks of ceramic-related activities, focused originally around the Portage Ceramic Awards, and now including all the exhibitions and open studios happening around town (and beyond) over that period.

Robyn Mason and I took on directing the Festival last year from Philip Clarke and Linda Tyler, who started it in 2014 with the Clayathon - a day-long bus trip to 8 galleries around Auckland, including the Judge's talk at the Portage. A key feature of these tours (we held three this year, now renamed Ceramic Safari, and not quite as much of a marathon!) is that the artist or curator talks about the work at each stop - just a short introduction and background, but one that makes the work that much more meaningful to the viewers.

Ever enthusiastic, we have tried to create a comprehensive catalogue of independently organised exhibitions and events, as well as instigating several Festival-organised events to complement the others. This year, our second, there was a noticeable buzz of excitement around the Festival, from the galleries and studios as well as the festival-goers. The possibilities seem endless - not only for what we can do in Auckland, but options for



Clockwise from top left: Eloise Kitson and Christine Hedlund discussing John Roy's exhibition Wasted Days at Masterworks; Finn McCahon Jones talking bricks, local clay, and Crown Lynn at Te Toi Uku; John Parker explaining crater glazes; Mary-Louise Brown discussing the inspiration behind Nichola Shanley's work in From Winter at Two Rooms

expanding further around the country - the big question now is how we best achieve them! We would love to hear from you - your ideas for the future of the Festival, what you'd like to see and do, how you would best be informed about events, and if you participated in any Festival events or activities,

any feedback you have about those. E-mail us at festivalofceramics@gmail.com, and please also spread the word: [facebook.com/festivalofceramics](https://www.facebook.com/festivalofceramics) and [Instagram @aucklandfestivalofceramics](https://www.instagram.com/aucklandfestivalofceramics) See you next year on the bus, at the open days, and in the galleries!



The Potters Olympics

Suzy Dunser

The Potters' Olympics is the activity I'm in charge of at the BCDO. Each year, as I ask people to take part, I know what I'm really asking: "Please get up on stage and, under pressure, in competition with experts, and in front of an audience of strangers, push yourselves to the limits of your ability!" Of course I phrase it differently at that point, but I do know that all this is

involved. I am very grateful that there are still stalwarts around and willing to take part - potters with so much experience that both they and I know the viewers will see some truly impressive throwing - and then I am super proud of the people who participate even though they don't have quite so much time potting under their belts, and know they are going up against these guys and

women with decades of experience. So here's a special shout-out to first-time Olympians Maak Bow, David Sullivan, Yue Luo, and Daniel Tai - I'm not sure even Daniel knew he could pull a strap that long, and David and Maak won the tandem throwing competition, first time out! Great job, all of you.

On Being the Editor

Peter Lange

I was the editor of the ASP newsletter for, I dunno, about 300 years, before I lost an apostrophe challenge to Suzy about 7 years ago (seven years, really?!) and handed in my pencil. What was the prize for the winner? An Apos Trophy of course - its hanging on her wall now on it's own nail. There is an ongoing and serious debate between Suzy and I about the correct use of the objective pronoun, and me and her have decided that it depends on whether you come from the North Shore or not. The Queen of course says "My husband and I" and it's Her English so she can if she wants, but I think you'll find she never does it after a verb anyway, unless one has come in exhausted from fox-hunting, or looking for a gerund near Balmoral. Is a Lady in Waiting a female gerund?

There's a misconception that all potters must be good cooks. Don't know where that came from, but I do recall Richard Shaw coming to Auckland in 1981 and during the course of a glazing discussion someone asked him for his favourite recipe. He trotted out his recipe for a green one called guacamole which many people faithfully wrote down in their glaze recipe books until he got to the avocado bit. Guacamole was unheard of at that time. A few years later Matt McLean and I were at the opening of the Fletcher exhibition, and being urban and cool guys, we were already up to speed with guacamole and got stuck into it as it came through the door from the kitchen. Just where we happened to be standing. What we hadn't caught up with at that point

was this new-fangled wasabi that had just hit the cafes, and after downing a sizeable spoonful each of what looked like guacamole, we had to rush out the door to find a useful tap to stick our faces under.

The point I am slowly getting to is that being good at something (like potting) doesn't mean you have equal talents at other skills, including writing. And this is what I found the most difficult part of the editor's job - encouraging literate potters to write anything. There are very good writer/potters like international stars Grayson Perry, Edmund de Waal and Garth Clark, and, locally, thoughtful pieces by Christine Thacker (all too rare) and blogs like Cone Ten and Descending. Occasionally some copy would come in that needed severe pruning and rearranging, but that's where editorial licence (rewriting) comes in. (Licence with a "c" or an "s"? I think I got it right, I've been practicing). So any contribution is always welcomed with relief.

Suzy had times, as did I, when she virtually had to write the entire newsletter. It takes away some of the pleasure, though I did once write an article I fervently disagreed with, and signed it with an anagram of my name, Pat Glenree or somesuch, and nobody wrote back. It can be a bit like throwing custard at the curtains in that respect. Please send in copy to the new editor, Katherine. She's going to need your input. I'm not sure she will be so silly as to write it all herself so if you want an interesting newsletter send in heaps of stuff: news, exhibitions, technical tips, pleas for help. All the best to her. And well done Suzy. You're the best. Seriously... I know how difficult a task it can be, and you have done a great job.



HELEN PERRETT ♦ SUSAN ST LAWRENCE

Opening Tuesday 21 December at 5:30pm

22 December 2017 - 22 January 2018 ♦ Artspost, Waikato Museum

Things get lost, stolen, mislaid, found, recycled, reclaimed - many end up at the Lost and Found office. Come explore this imaginary world by the Small Stories Collaborative; there's no knowing what you might uncover.

ASP CENTRE

Opening Hours

Monday - Thursday: 1pm - 5pm

Friday: 1pm - 4pm

Saturday: 10am - 4pm

\$5/hr or \$4/hr with concession card
(includes after class time)
up to a maximum of \$15 per session

Centre Directors:

Nadine Spalter and Toby Twiss

Phone 09 634 3622

www.botpots.nz

Tel: 09 271 2626 Email: botpots@ihug.co.nz



Botany Pottery Studio Ltd.

Unit 1A, 2 Bishop Dunn Place, Flat Bush, Manukau



STOP THE PRESS!

FERRO#271D
TRANSPARENT GLAZE
1040-1250cc

Due to customer demand Ferro Corp have re introduced this popular glaze. Stock readily available with continuity assured from your supplier for the last 49 years.

CCG

INDUSTRIES

09 475 5224
info@ccg.co.nz